

ABOUT US

Glenmary Home Missioners is a society of Catholic priests and brothers founded in 1939 to establish an effective Catholic Church presence in the rural areas of the United States. Glenmary pursues this “big mission” in collaboration with many coworkers and a community of cooperating women religious.

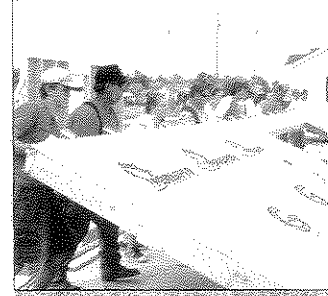
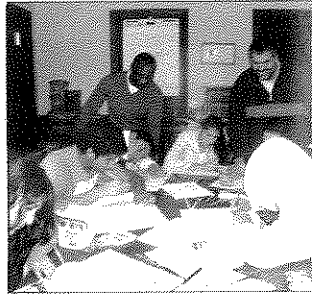
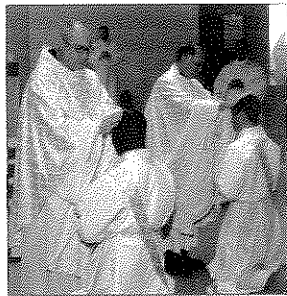
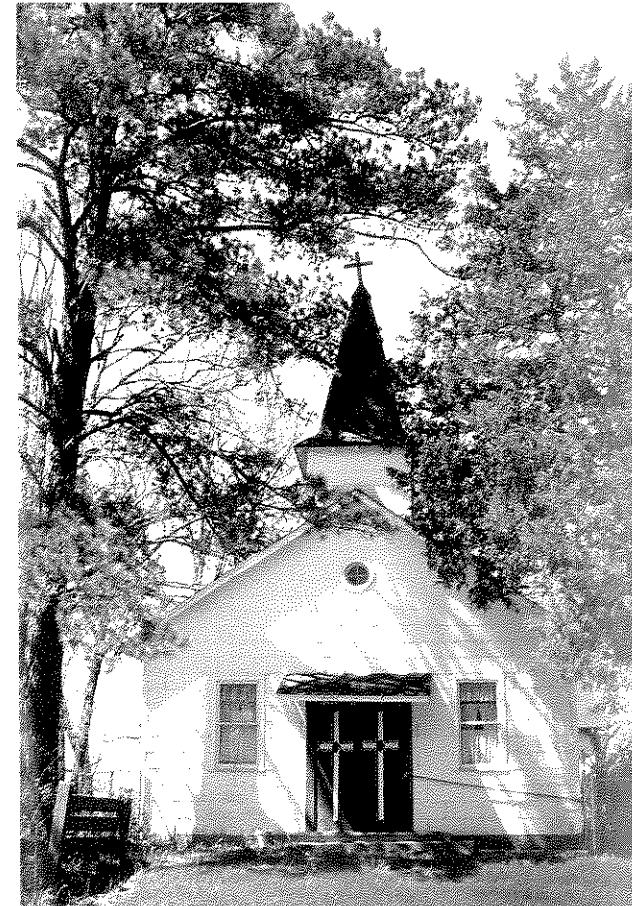
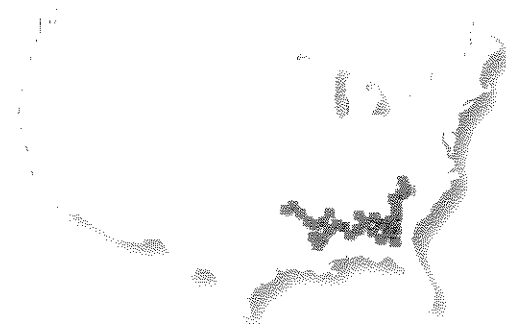
Glenmary is committed to serving the spiritual and material needs of those living in some of the most impoverished counties of Appalachia and the South by nurturing the Catholic minority and reaching out to the unchurched and the poor.

There are many ways that you, too, can become a part of this big mission. Join us today!



A Big Mission Many Opportunities

Glenmary Home Missioners



Glenmary Home Missioners

@GlenmaryMission



Connect With Us!

LIFETIME COMMITMENT

Priesthood and Brotherhood. Glenmary priests and brothers make a lifelong commitment to proclaim the Good News of Jesus Christ and share the gifts of the Catholic Church with those living in rural America. They provide pastoral ministry and staff Catholic missions and ministries in dioceses throughout the South and Appalachia. They also work for justice, provide social outreach, foster ecumenical cooperation and provide home mission leadership and research for the U.S. Church.

For more information, contact: Vocation Director, P.O. Box 465618, Cincinnati, OH 45246, 800-935-0975, vocation@glenmary.org.

Sisterhood. Glenmary Home Mission Sisters of America provide missionary services to all God's children in the southeastern United States including Appalachia. Through their ministry of presence and willingness to share in the daily struggles of the families where they serve, the people of these areas come to



FATHER CRIS ADONGO, following his 2012 ordination, now serves those living in the home missions.

understand the love and concern of the Catholic Church and their own dignity.

For more information, contact: Vocation Facilitator, P.O. Box 22264, Owensboro, KY 42304, 706-414-2982, barbara@glenmarysisters.org, www.glenmarysisters.org.

PROFESSIONAL MINISTRY

Glenmary Pastoral Coordinators start new Catholic churches in counties in the rural South where there had been no official Catholic presence. They also assume leadership of Catholic missions that previously had Glenmary priest-pastors. These men and women—married, single, vowed religious—are appointed by the local bishop and have the comprehensive responsibility for the growth and development of the local mission community. They facilitate outreach ministries of ecumenism, evangelization and social service as well as working for justice. Glenmary provides orientation and a professional salary.

Requirements:

- a master's degree in theology, pastoral ministry or religious studies;



SUSAN SWEET, a Glenmary pastoral coordinator, helps prepare for Mass with sacramental minister Father John Brown in Cuthbert, Ga.

- at least three years of full-time parish experience, preferably in a rural setting;
- Spanish and English fluency preferred.

For more information, contact:

Glenmary's Department of Pastoral Ministers and Pastoral Services, coworkers@glenmary.org.

Glenmary Pastoral Associates work with a Glenmary priest-pastor or pastoral coordinator to provide mission leadership and pastoral care. This full-time ministry relates to all aspects of parish life, but designated responsibilities can include liturgy, faith formation/development, administration and pastoral care as well as missionary outreach. Glenmary provides orientation and a professional salary.

Requirements:

- a master's degree in theology, pastoral studies or related field and previous parish ministry experience, preferably in a rural setting;
- Spanish and English fluency preferred.

For more information, contact:

Glenmary's Department of Pastoral Ministers and Pastoral Services, coworkers@glenmary.org.

SHORT-TERM SERVICE

Group Volunteer Program Managers (*one to two years*). Three to five volunteer managers provide leadership for short-term mission immersion experiences for high-school, college and adult parish volunteer groups at the Glenmary Farm in Eastern Kentucky and at the volunteer site located in Eastern Tennessee.

Glenmary sponsors these two cross-cultural, mission immersion service opportunities in Appalachia. Living expenses,

transportation, health/dental insurance and stipend are provided. In addition, volunteer managers are eligible to earn Americorps education awards upon completion of their service.

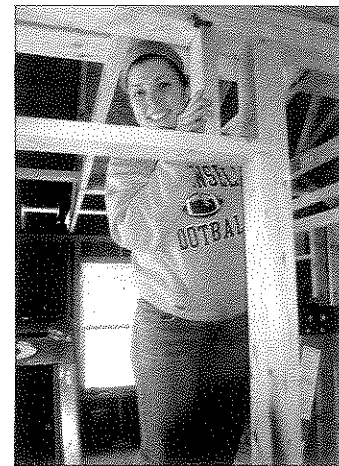
For more information or an application, contact: Volunteer Director, P.O. Box 69, Rutledge, TN 37861, 606-202-3658 (cell), volunteer@glenmary.org.

Group Volunteer Program (*one week*).

This program, sponsored by Glenmary, gives volunteer groups from high schools, colleges and parishes throughout the United States a one-week opportunity to experience mission firsthand. Volunteers reach out to local people living in Eastern Kentucky and Eastern Tennessee and share in an environment of simple living. Service, education, prayer, reflection and sharing are all components of the volunteer experience. Group size ranges from 12 to 30 volunteers.

For more information, contact:

Volunteer Director, P.O. Box 69, Rutledge, TN 37861, 606-202-3658 (cell), volunteer@glenmary.org.



A VOLUNTEER at the Glenmary Farm helps build a home for a family in need in Eastern Kentucky.