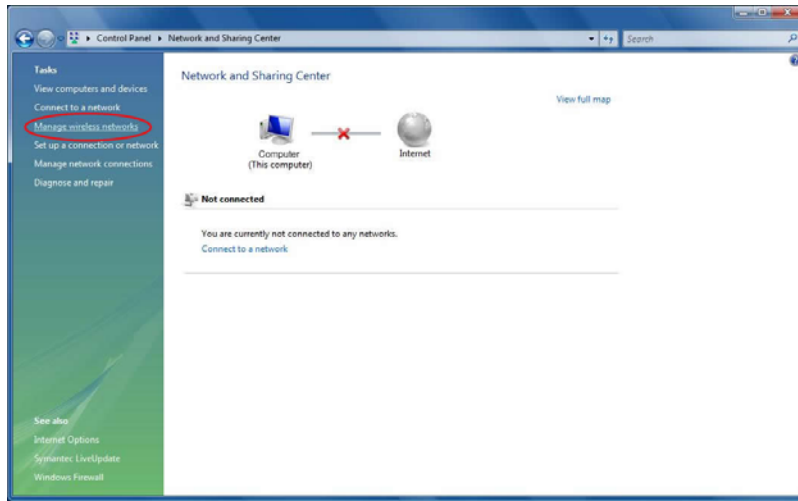


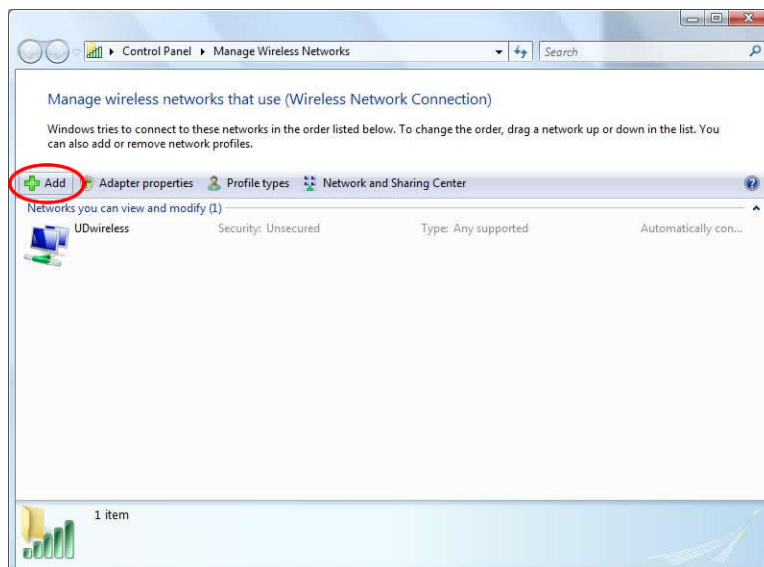
Connecting to UDsecure with Windows Vista

Follow these steps to connect your Windows Vista machine to the University of Dayton's secure wireless network. Make sure you have service pack 1 installed or you may have trouble connecting.

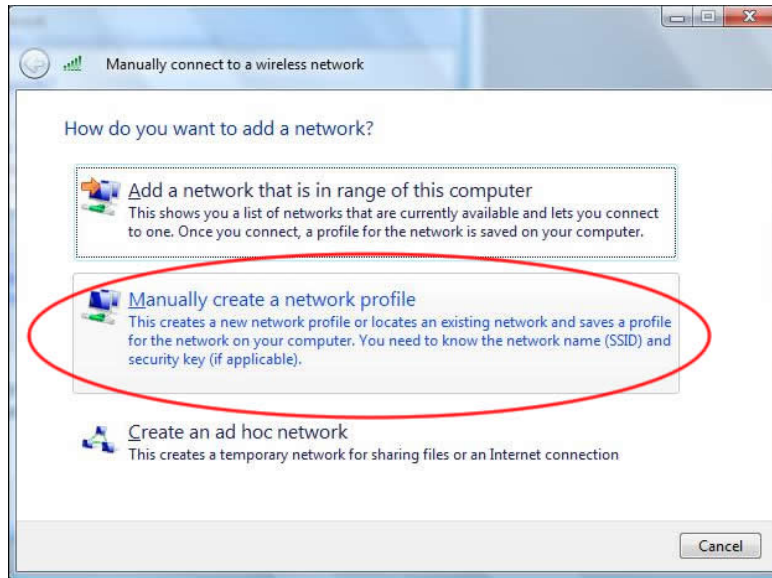
1. Access the Network and Sharing Center by clicking **Start >> Control Panel >> Network and Sharing Center**.
2. Select **Manage wireless networks**.



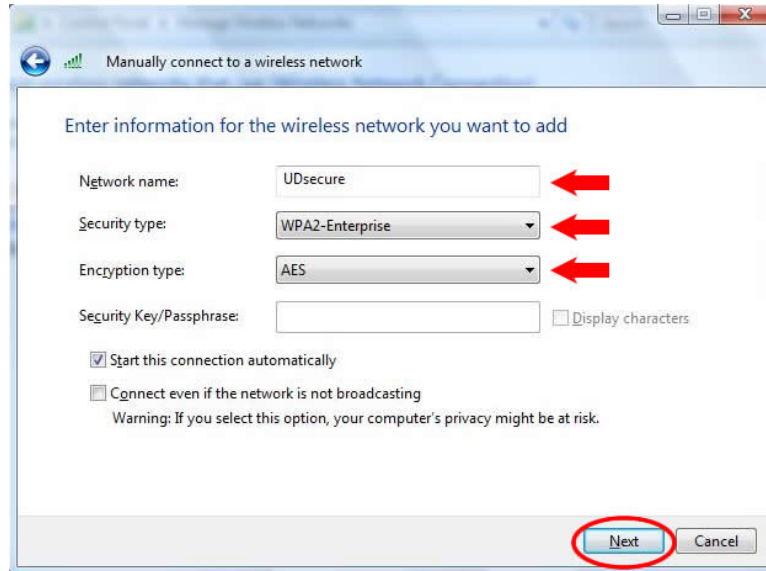
3. Click **Add**.



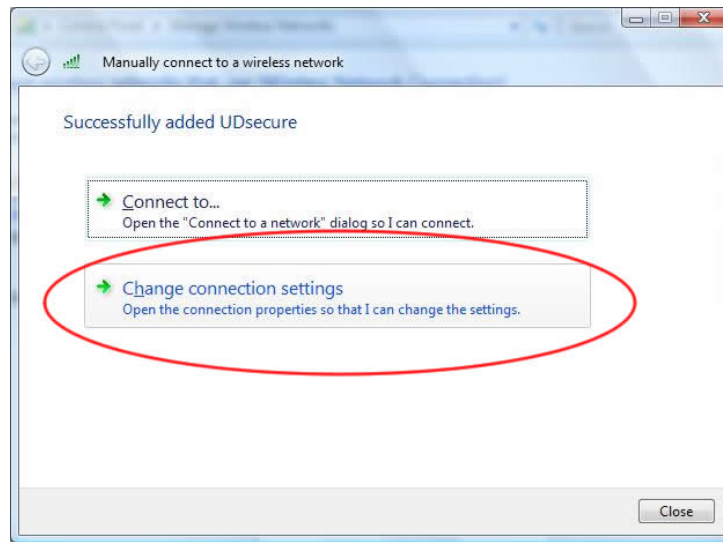
4. Choose **Manually create a network profile**.



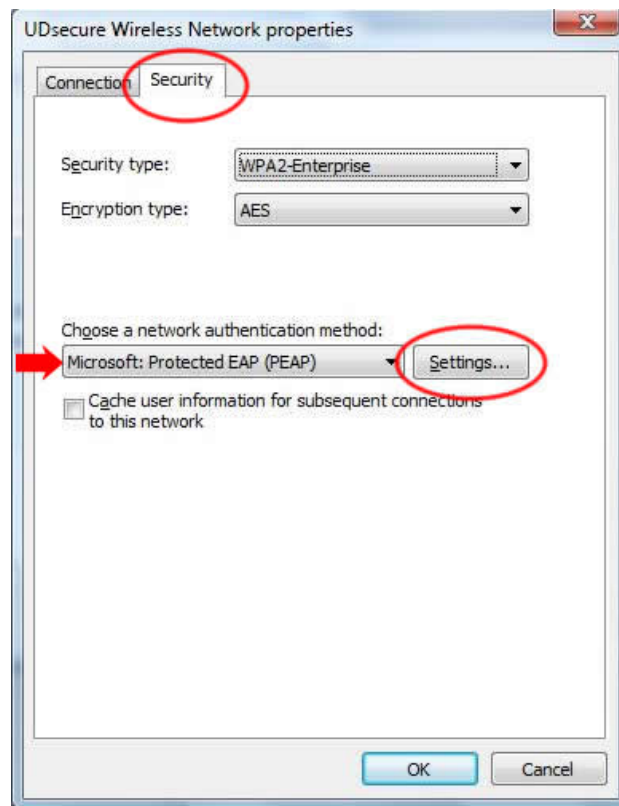
5. For "Network name" enter **UDsecure**, under "Security type" select **WPA2-Enterprise** and for "Encryption" select **AES** then click **Next**. *Note: If you wish to automatically connect to this network check the box next to "Start this connection automatically".*



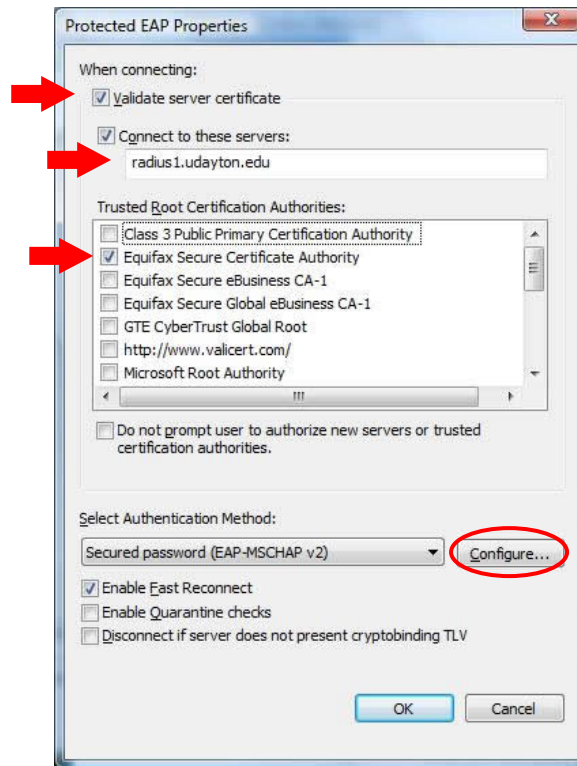
6. Select **Change connection settings**.



7. Click on the **Security** tab, make sure **Microsoft: Protect EAP (PEAP)** is selected as the network authentication method, then click **Settings**.



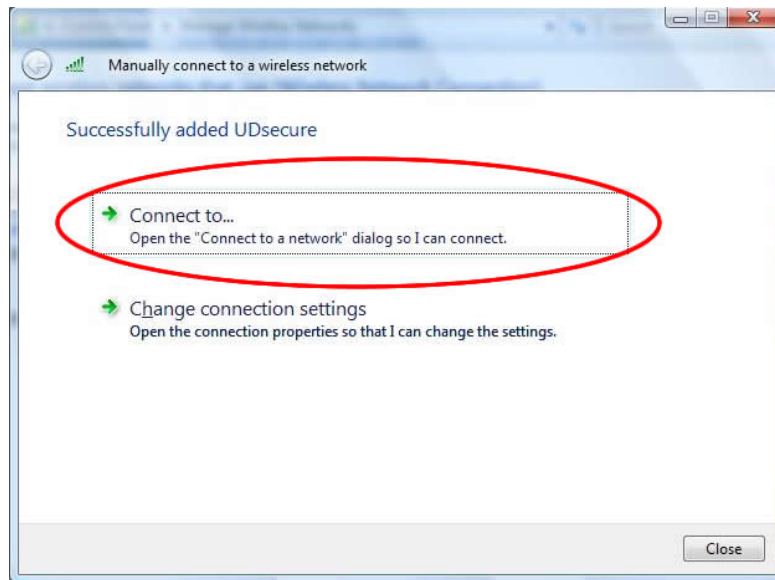
8. Select “Validate server certificate” and type **radius1.udayton.edu** under “Connect to these servers”. Make sure **Secured password (EAP-MSCHAP v2)** is selected as the Authentication Method and click **Configure**.



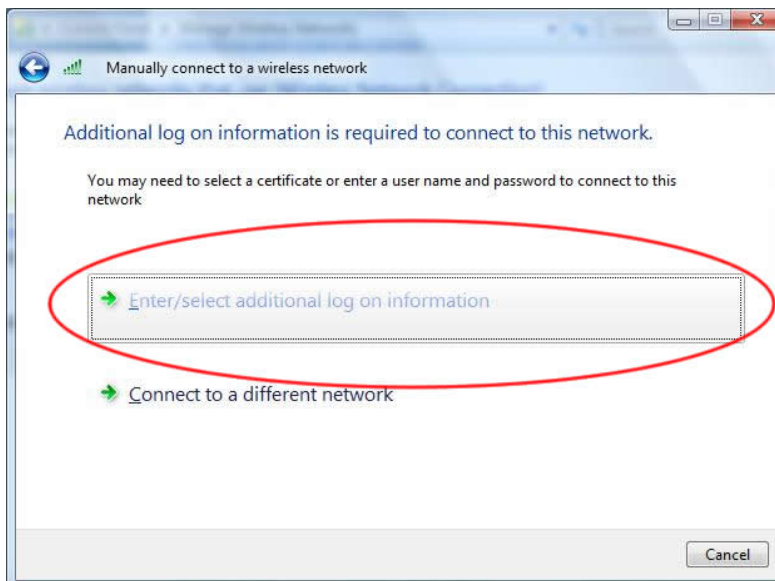
9. **Uncheck** the box to “Automatically use your Windows logon name and password.”



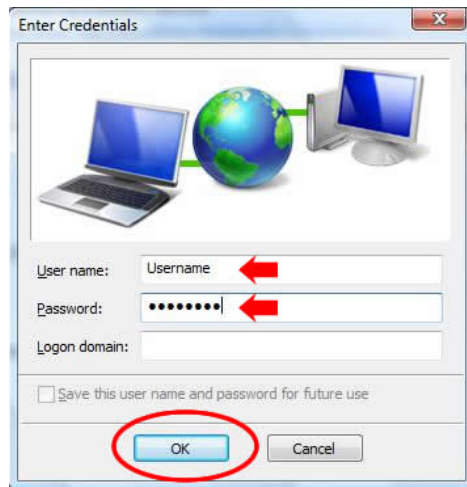
10. Press **OK three times** to get back to the screen shown below and press **Connect to...**



11. Click **Enter/select additional log on information**.



12. Enter your **LDAP Username** and **Password** and press **OK**.



13. If everything is setup properly you should see a message that you connected successfully.