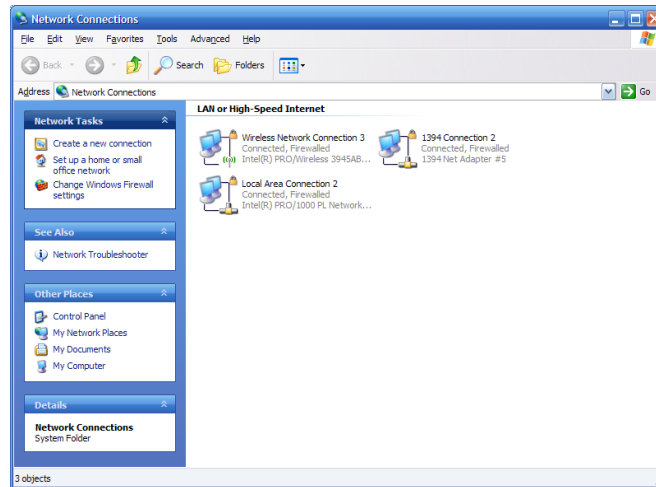


Connecting to UDsecure with Windows XP

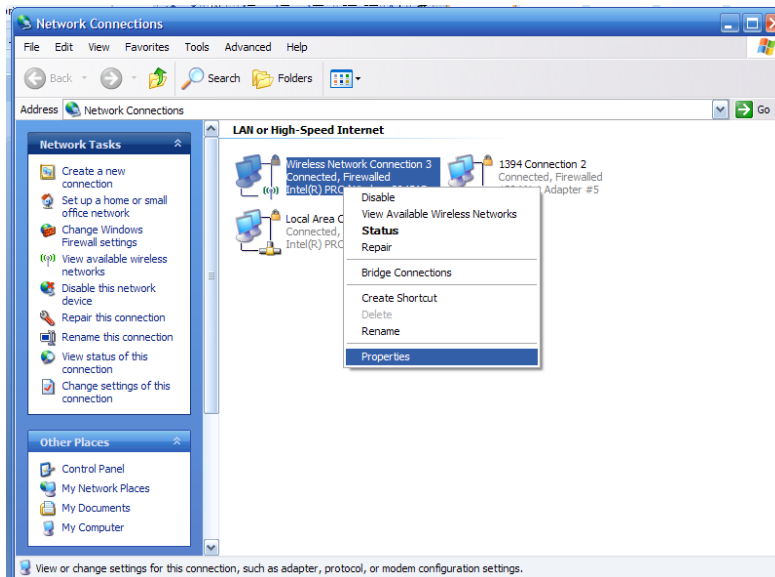
Section 1: Connecting to UD's Secure Wireless Network

Follow these steps to connect your Windows XP machine to the University of Dayton's secure wireless network. Make sure the computer has the most recent updates before beginning.

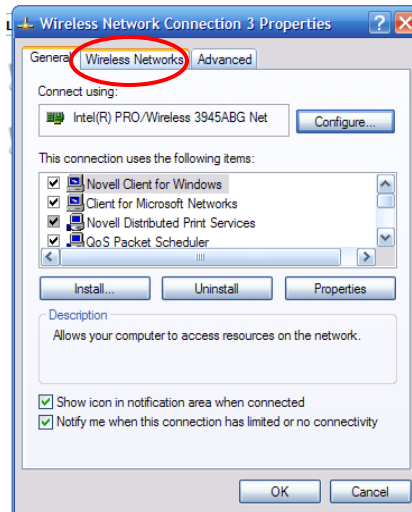
1. Access the Network Connections by clicking **Start >> Control Panel >> Network Connections**.



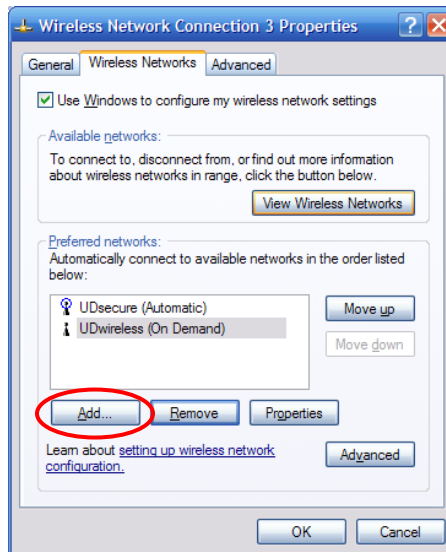
2. Right click the "Wireless Network Connection" icon and select "Properties".



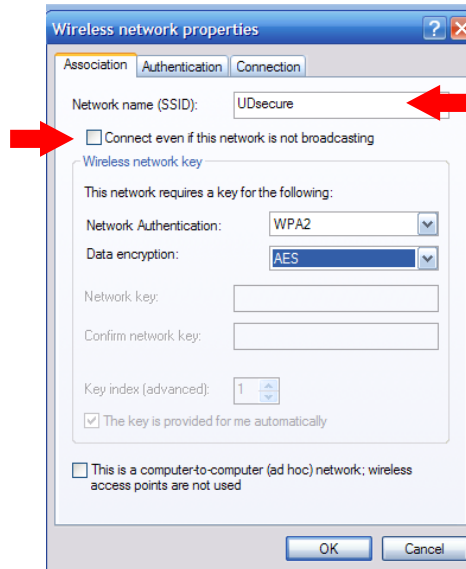
3. A dialog box will pop up; click the "Wireless Networks" tab.



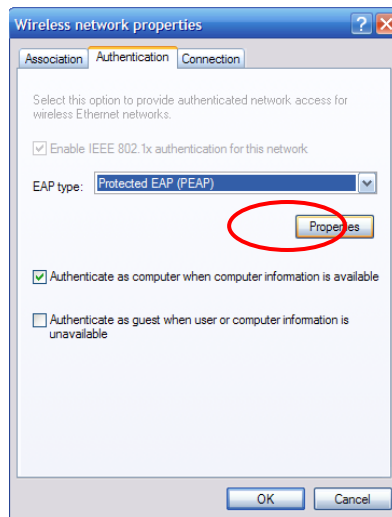
4. Click the “Add” button in the bottom left corner.



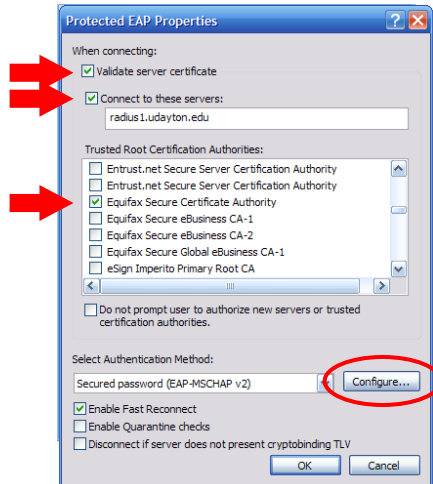
5. Type **UDsecure** in the textbox at the top
6. **Uncheck** the box that says “connect even if the network is not broadcasting”.



7. Select **WPA2** for “network authentication” and **AES** for “data encryption”.
8. Click the “Authentication” tab. Select PEAP for “EAP type” and click “Properties”.



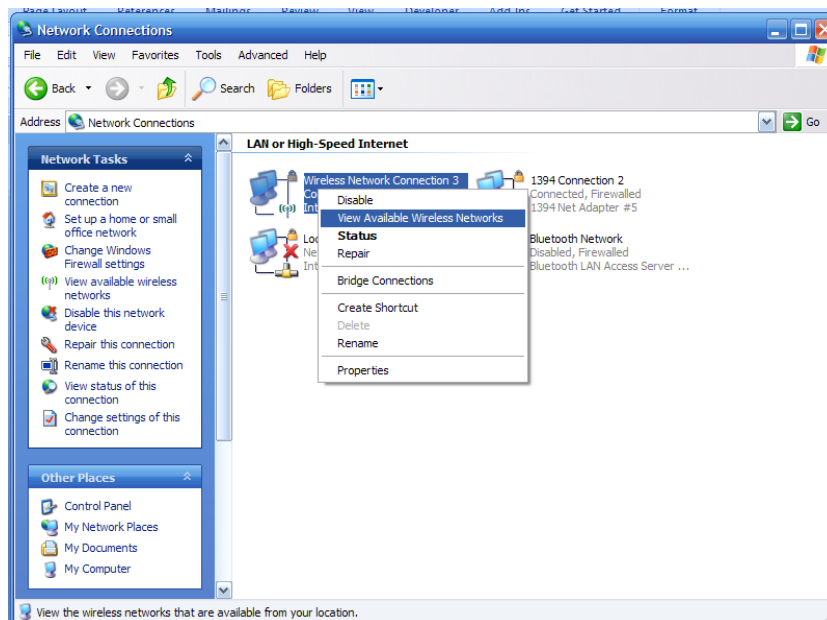
9. Make sure the box is checked for “Validate Server Certificates” and type **radius1.udayton.edu** under connect to these servers. Under “Trusted Root Certification Authorities” check the certificate named **Equifax Secure Certificate Authority**.



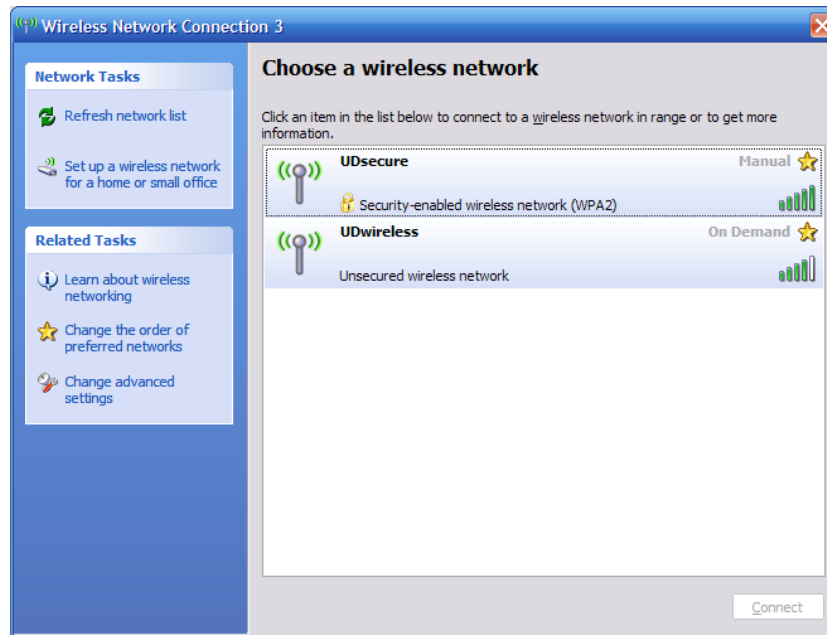
10. "Select Authentication Method" should be **Secured password (EAP-MSCHAP v2)**. Then click "Configure" and uncheck the box to "Automatically use my Windows logon..."



11. Click "OK" four times.
12. Right-click on the "Wireless Network Connection" icon and select "View Available Wireless Networks".



13. Click **UDsecure** wireless network to connect



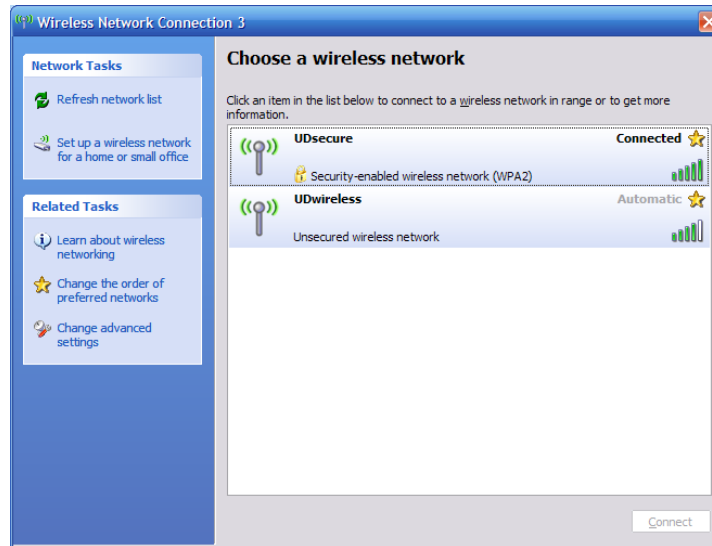
14. Click the pop-up in the bottom right hand corner of the screen to access the login screen



15. Enter your **LDAP** username and password

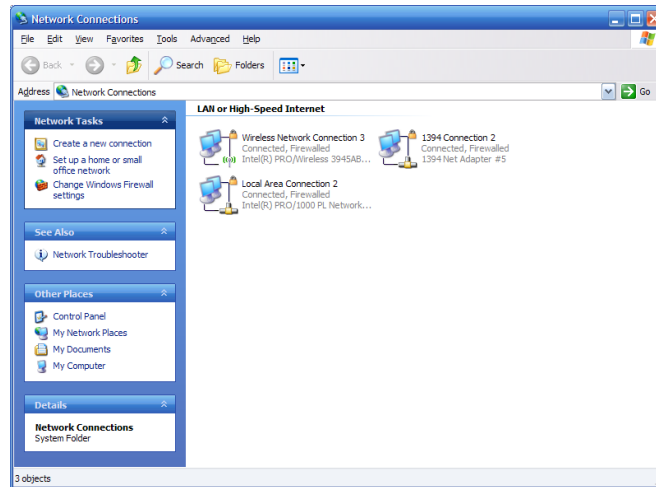


16. Click "OK" to connect to **UDsecure**.

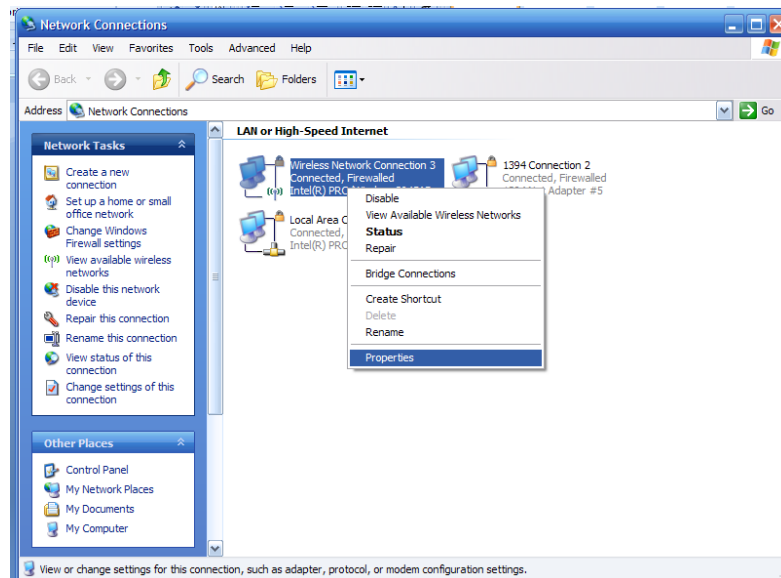


Section 2: Making UDsecure your Preferred Wireless Connection

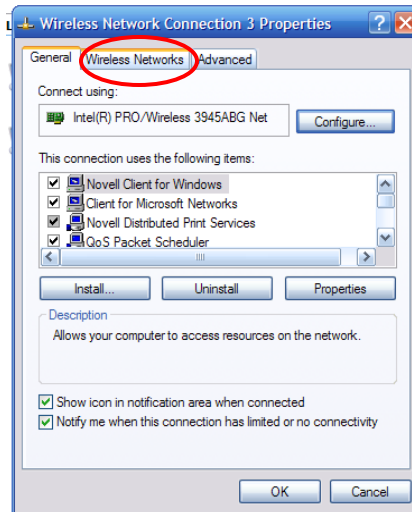
1. Access the Network Connections by clicking **Start >> Control Panel >> Network Connections**.



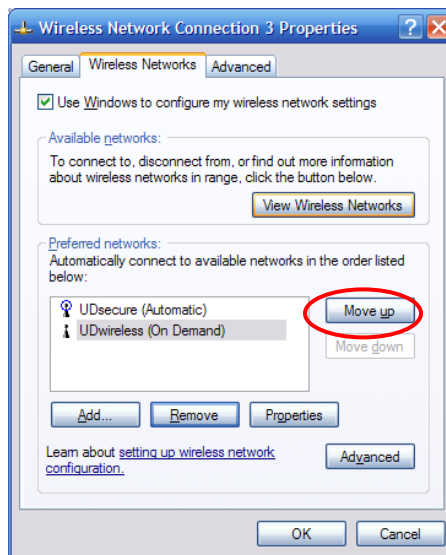
2. Right-click on "Wireless Network Connection" and select "Properties".



3. In the "Wireless Network Connections" dialog box, click the "Wireless Networks" tab.



4. Highlight the name of the Wireless Connection and click the **Move Up** or **Move Down** button depending on the situation. For example below we highlighted **UDwireless** and want to make it our preferred network so then we would click the **Move Up** button.

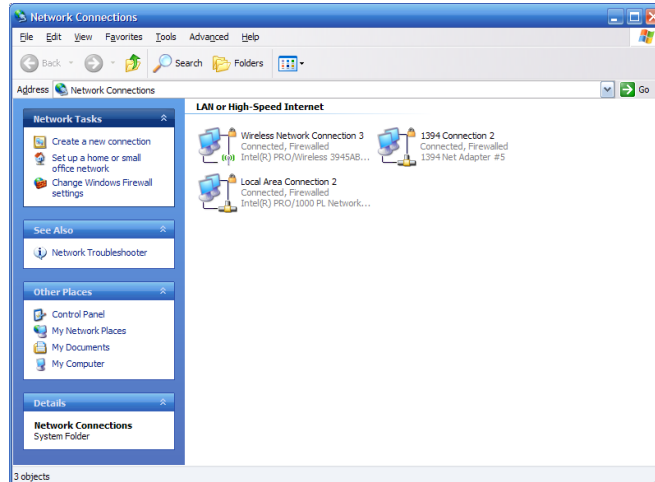


5. Click "OK" to finish.

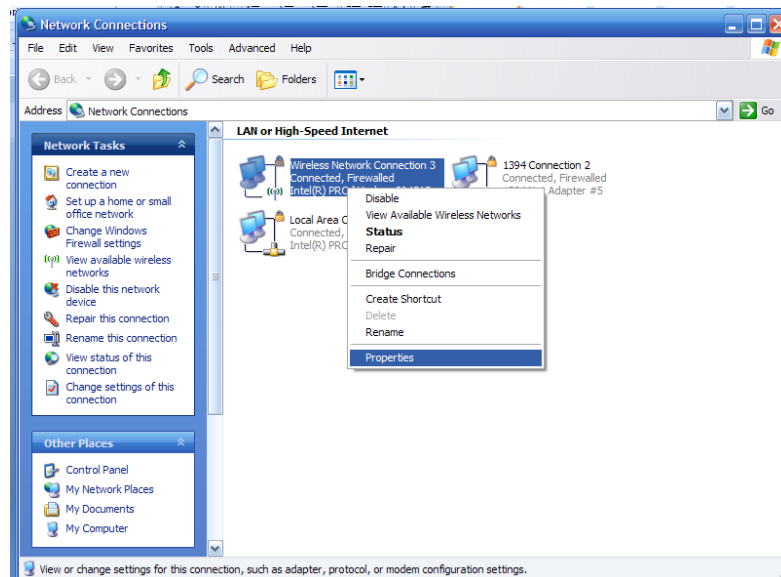
Section 3: Recommended Configuration

For optimal performance we suggest you follow these steps to configure **UDwireless** and **UDsecure**

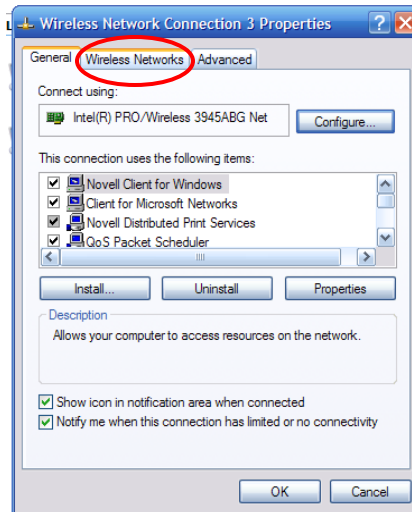
1. Access the Network Connections by clicking **Start >> Control Panel >> Network Connections**.



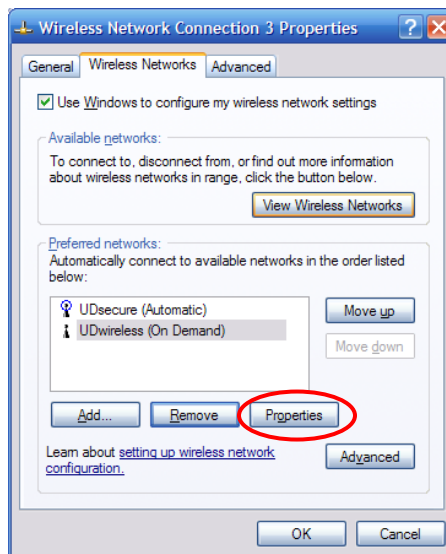
2. Right-click on the "Wireless Network Connection" icon and select "Properties"



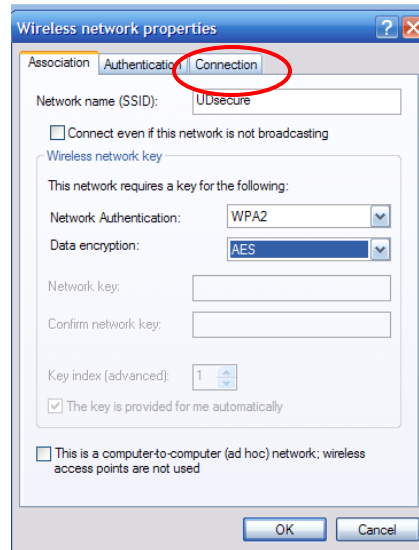
3. In the "Wireless Network" dialog box, select the "Wireless Networks" tab



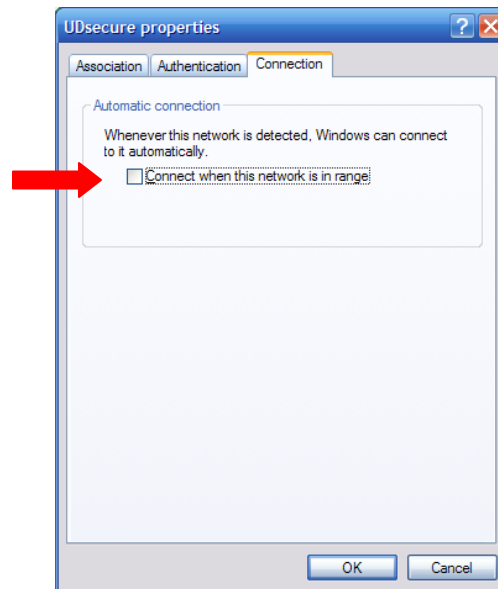
4. Click the "Properties" button after highlighting one of the wireless network entries



5. In the "Properties" dialog box, click the "Connection" tab



6. Uncheck the box marked “Connect when this network is in range”



7. Click “OK” twice to finish.